

## **E-Rate Cat-2 2019 Equipment Requirements**

**Site:** Gabbs Elementary School

Gabbs Middle School

Gabbs High School

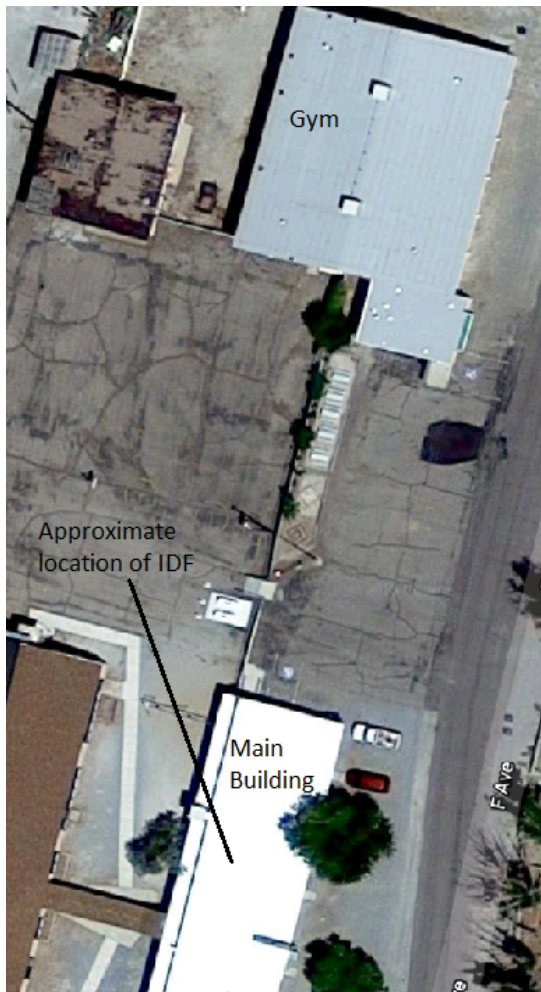
511 E. Avenue. Gabbs, NV 89409

## Wireless Bridge for Building Connectivity

**Project Description:** To bridge network connectivity to the school Gym/Multi-Purpose-Room by way of wireless sky bridge. The directional radio equipment will connect the main school building and the Gym via rooftop mounts. The equipment and mounts must be rated for high wind and inclement weather operation. The distance will be close to 300 ft and the rated speed must be at least 100 Mb/s. The radio units must be completely self contained and POE powered.

**Additional Notes:** The main school building has a conduit path that feeds existing infrastructure. This can serve as the path for the protected Cat6 cable that will feed the radio. The Gym will need a method to direct a cable from outside to the building interior and a termination spot inside a maintenance closet. Most likely this will be on the near side of the Gym. The cable will need to be protected from the elements on the outside of the building.

figure 1 aerial view and individual buildings



**Vendor Selection**

Supplies	Qty	Make/Model/Desc	Unit Price \$
Add'l Supplies	Qty	Make/Model/Desc	Unit Price \$
Add'l Supplies	Qty	Make/Model/Desc	Unit Price \$
Add'l Supplies	Qty	Make/Model/Desc	Unit Price \$
Add'l Supplies	Qty	Make/Model/Desc	Unit Price \$
Add'l Supplies	Qty	Make/Model/Desc	Unit Price \$
Add'l Supplies	Qty	Make/Model/Desc	Unit Price \$
Add'l Supplies	Qty	Make/Model/Desc	Unit Price \$
Add'l Supplies	Qty	Make/Model/Desc	Unit Price \$
Add'l Supplies	Qty	Make/Model/Desc	Unit Price \$

Project Labor Total Cost \$ Or Qty X Unit Price \$

**Notes:**

**Section Total \$**

Check here if additional information is attached.